

Postal Code 78611

Residential Statistics



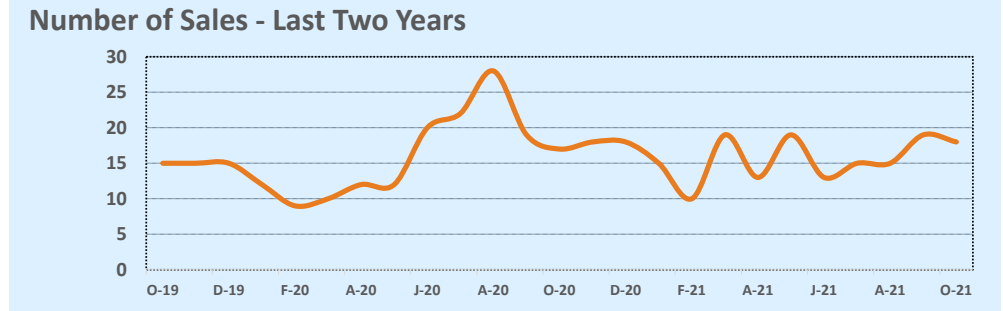
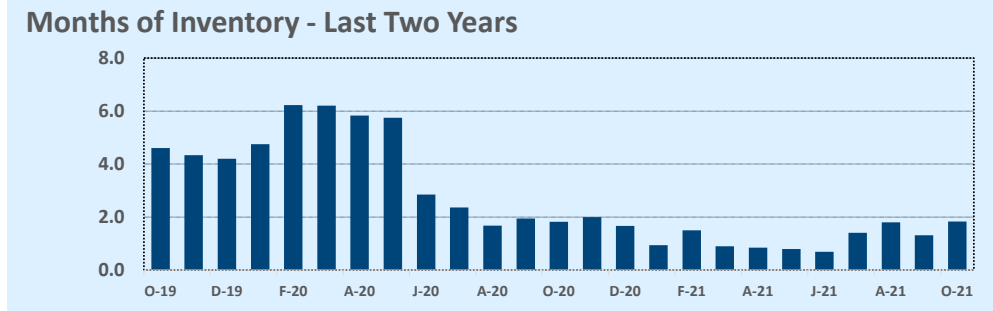
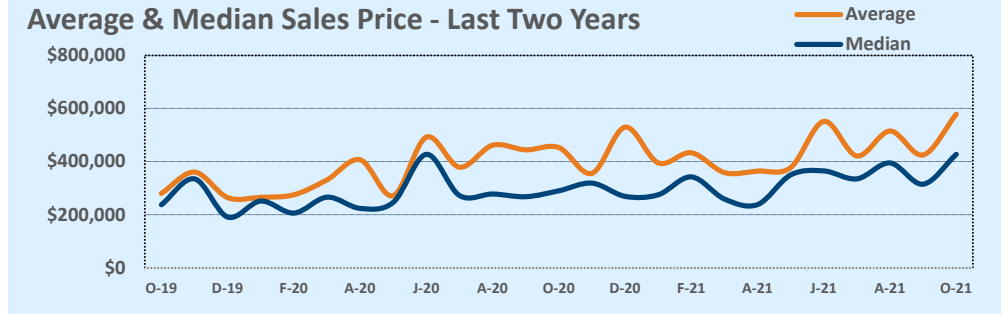
October 2021

Listings	This Month			Year-to-Date		
	Oct 2021	Oct 2020	Change	2021	2020	Change
Single Family Sales	18	17	+5.9%	156	161	-3.1%
Condo/TH Sales	--	--	--	--	--	--
Total Sales	18	17	+5.9%	156	161	-3.1%
New Homes Only	--	1	--	16	15	+6.7%
Resale Only	18	16	+12.5%	140	146	-4.1%
Sales Volume	\$10,416,250	\$7,702,107	+35.2%	\$68,701,844	\$64,372,700	+6.7%
New Listings	23	15	+53.3%	192	202	-5.0%
Pending	--	--	--	--	--	--
Withdrawn	--	--	--	1	17	-94.1%
Expired	--	--	--	1	17	-94.1%
Months of Inventory	1.8	1.8	+0.5%	N/A	N/A	--

Price Range	This Month			Year-to-Date		
	New	Sales	DOM	New	Sales	DOM
\$149,999 or under	--	--	--	7	9	34
\$150,000- \$199,999	--	1	26	8	8	12
\$200,000- \$249,999	3	3	50	20	28	32
\$250,000- \$299,999	2	3	5	36	24	17
\$300,000- \$349,999	5	1	29	22	15	40
\$350,000- \$399,999	3	1	--	19	12	27
\$400,000- \$449,999	--	--	--	6	8	39
\$450,000- \$499,999	--	--	--	6	2	21
\$500,000- \$549,999	1	1	63	7	7	23
\$550,000- \$599,999	3	1	98	8	7	60
\$600,000- \$699,999	1	2	8	11	12	22
\$700,000- \$799,999	1	1	12	9	8	33
\$800,000- \$899,999	2	1	5	9	4	77
\$900,000- \$999,999	--	1	29	4	4	70
\$1M - \$1.99M	2	2	25	17	8	120
\$2M - \$2.99M	--	--	--	2	--	--
\$3M+	--	--	--	1	--	--
Totals	23	18	27	192	156	36

Average	This Month			Year-to-Date		
	Oct 2021	Oct 2020	Change	2021	2020	Change
List Price	\$593,183	\$465,053	+27.6%	\$437,027	\$415,216	+5.3%
List Price/SqFt	\$271	\$208	+30.3%	\$218	\$187	+16.3%
Sold Price	\$578,681	\$453,065	+27.7%	\$440,396	\$399,830	+10.1%
Sold Price/SqFt	\$268	\$203	+31.9%	\$219	\$181	+21.1%
Sold Price / Orig LP	98.9%	97.5%	+1.4%	101.0%	97.3%	+3.7%
Days on Market	27	83	-67.1%	36	78	-53.6%

Median	This Month			Year-to-Date		
	Oct 2021	Oct 2020	Change	2021	2020	Change
List Price	\$470,000	\$349,000	+34.7%	\$329,900	\$275,000	+20.0%
List Price/SqFt	\$229	\$175	+30.5%	\$190	\$157	+20.9%
Sold Price	\$427,500	\$290,000	+47.4%	\$335,000	\$272,000	+23.2%
Sold Price/SqFt	\$216	\$168	+28.5%	\$193	\$154	+25.2%
Sold Price / Orig LP	100.0%	98.7%	+1.3%	100.0%	98.0%	+2.0%
Days on Market	9	36	-76.4%	9	46	-80.4%



Based on information from the Austin Board of REALTORS® (alternatively, from ACTRIS). Neither the Board nor ACTRIS guarantees or is in any way responsible for its accuracy. The Austin Board of REALTORS®, ACTRIS and their affiliates provide the MLS and all content therein "AS IS" and without any warranty, express or implied. Data maintained by the Board or ACTRIS may not reflect all real estate activity in the market.